



93 Mariner Point Brighton Road | | Shoreham-By-Sea | BN43

ADU 1

**WB**  
WARWICK BAKER  
ESTATE AGENT



## 93 Mariner Point Brighton Road | | Shoreham-By-Sea | BN43 6DH

£570,000

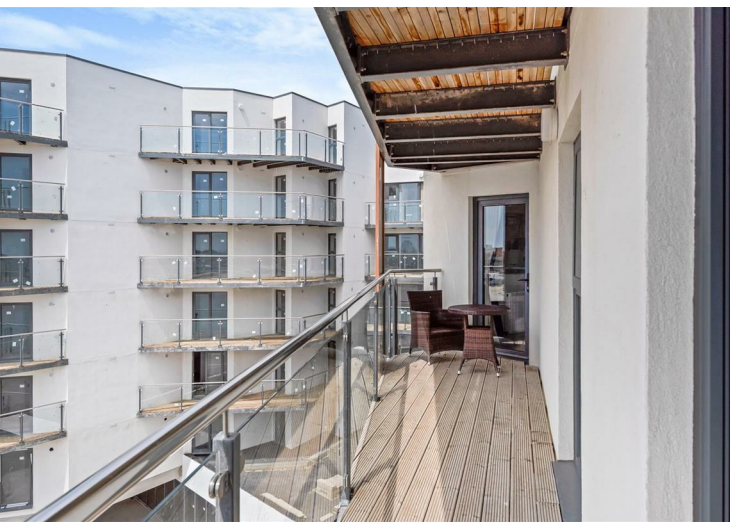
PHASE 2

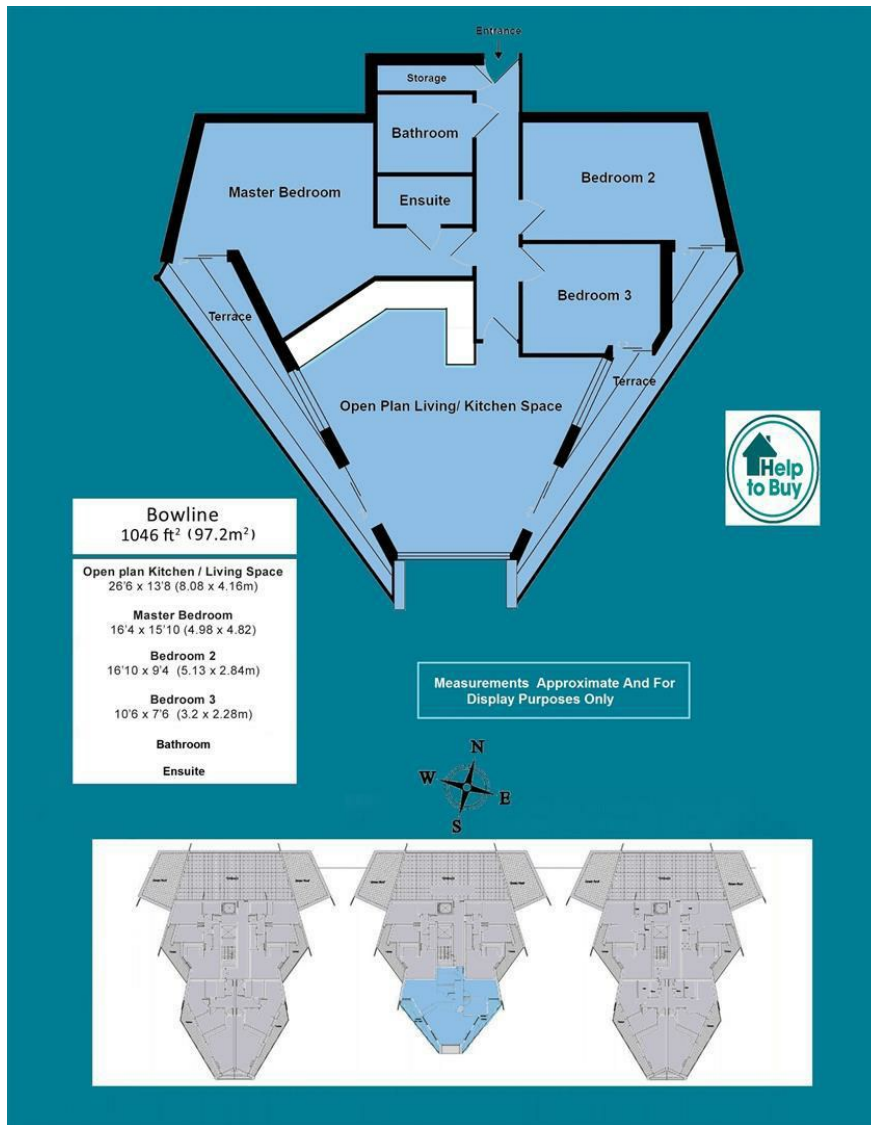
BOW LINE - FIRST FLOOR - 3 BEDROOMS - FIFTH FLOOR

HELP TO BUY SCHEME AVAILABLE - CALL NOW FOR MORE DETAILS 01273 461144

Mariner Point is a stunning collection of one, two and three bedroom apartments located in the harbour town of Shoreham-by-sea.

- LUXURY NEW BUILD APARTMENT
- DIRECT RIVER VIEWS
- MODERN CONTEMPORARY FINISH
- 10 YEAR GUARANTEE
- SOUTHERLY ASPECT BALCONY
- CLOSE TO MAINLINE RAILWAY STATION
- AUDIO ENTRY SYSTEM
- LIFT TO ALL FLOORS
- SECURE UNDERGROUND PARKING
- HELP TO BUY SCHEME AVAILABLE





**Disclaimer**

\* These particulars are intended to give a fair and substantially correct overall description for the guidance of intending purchasers and do not constitute an offer or part of a contract. Prospective purchasers and/or lessees ought to seek their own independent professional advice.

\* All descriptions, dimensions, areas, references to condition and necessary permissions for use and occupation and other details are given in good faith and are believed to be correct, but any intending purchasers should not rely on them as statements or representations of fact, but must satisfy themselves by inspection or otherwise as to the correctness of each of them.

\* All measurements are approximate

Energy Efficiency Rating		Environmental Impact (CO <sub>2</sub> ) Rating			
	Current	Potential		Current	Potential
Very energy efficient - lower running costs			Very environmentally friendly - lower CO <sub>2</sub> emissions		
(92 plus) <b>A</b>			(92 plus) <b>A</b>		
(81-91) <b>B</b>			(81-91) <b>B</b>		
(69-80) <b>C</b>			(69-80) <b>C</b>		
(55-68) <b>D</b>			(55-68) <b>D</b>		
(39-54) <b>E</b>			(39-54) <b>E</b>		
(21-38) <b>F</b>			(21-38) <b>F</b>		
(1-20) <b>G</b>			(1-20) <b>G</b>		
Not energy efficient - higher running costs			Not environmentally friendly - higher CO <sub>2</sub> emissions		
<b>England &amp; Wales</b>	EU Directive 2002/91/EC		<b>England &amp; Wales</b>	EU Directive 2002/91/EC	